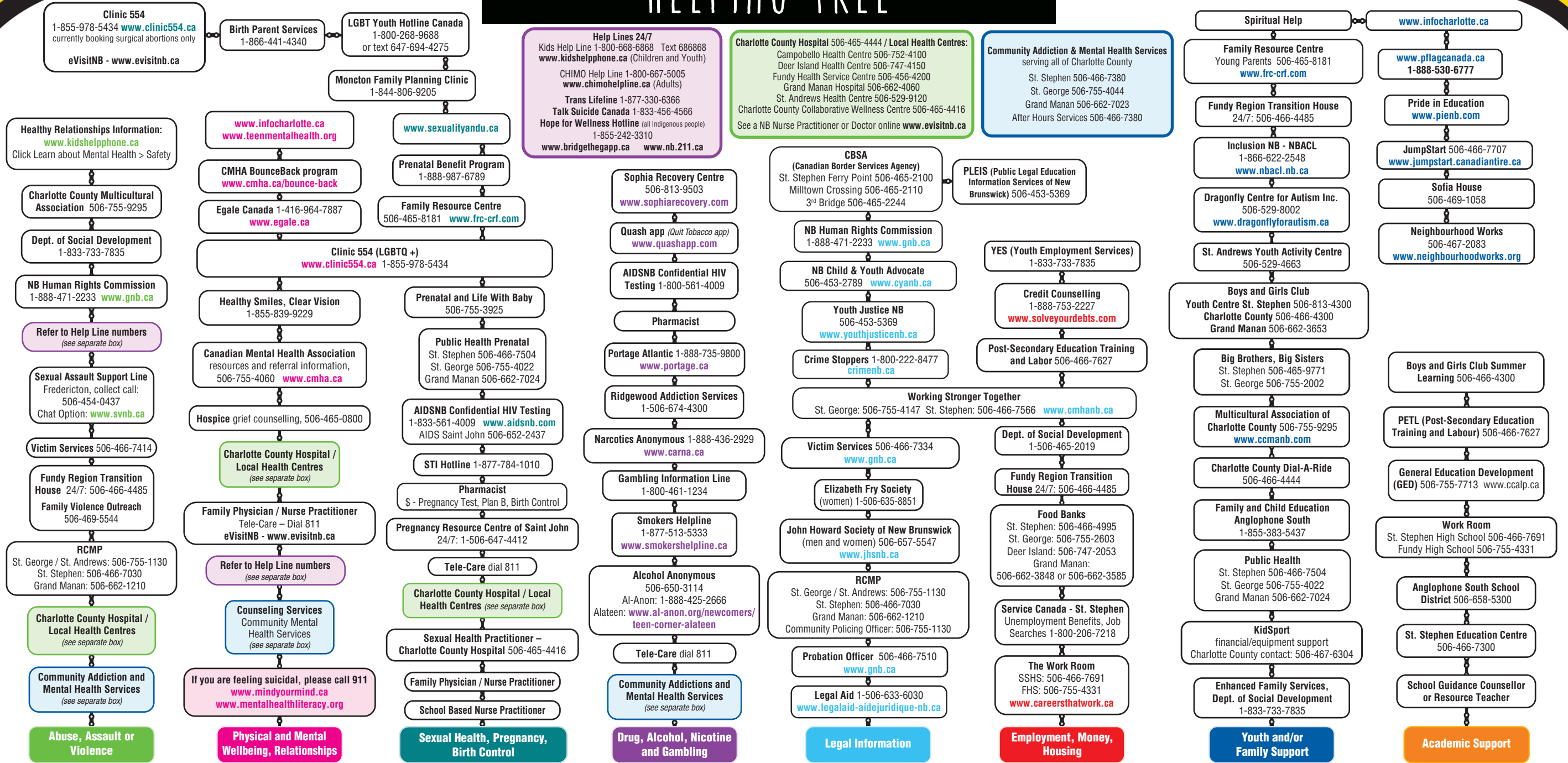


HELPING TREE



1 Take a look at the coloured boxes at the bottom of the Helping Tree and identify the issue that concerns you.

Identify the issue, then the resource.

2 Once you've identified the issue, look at the support services listed for each and find the one that feels right for you.



START HERE

Charlotte County

In your school, information and support is available from a guidance counselor, teacher, principal, social worker, nurse practitioner, Child and Youth Team member
IN CASE OF EMERGENCY, PLEASE CALL 911