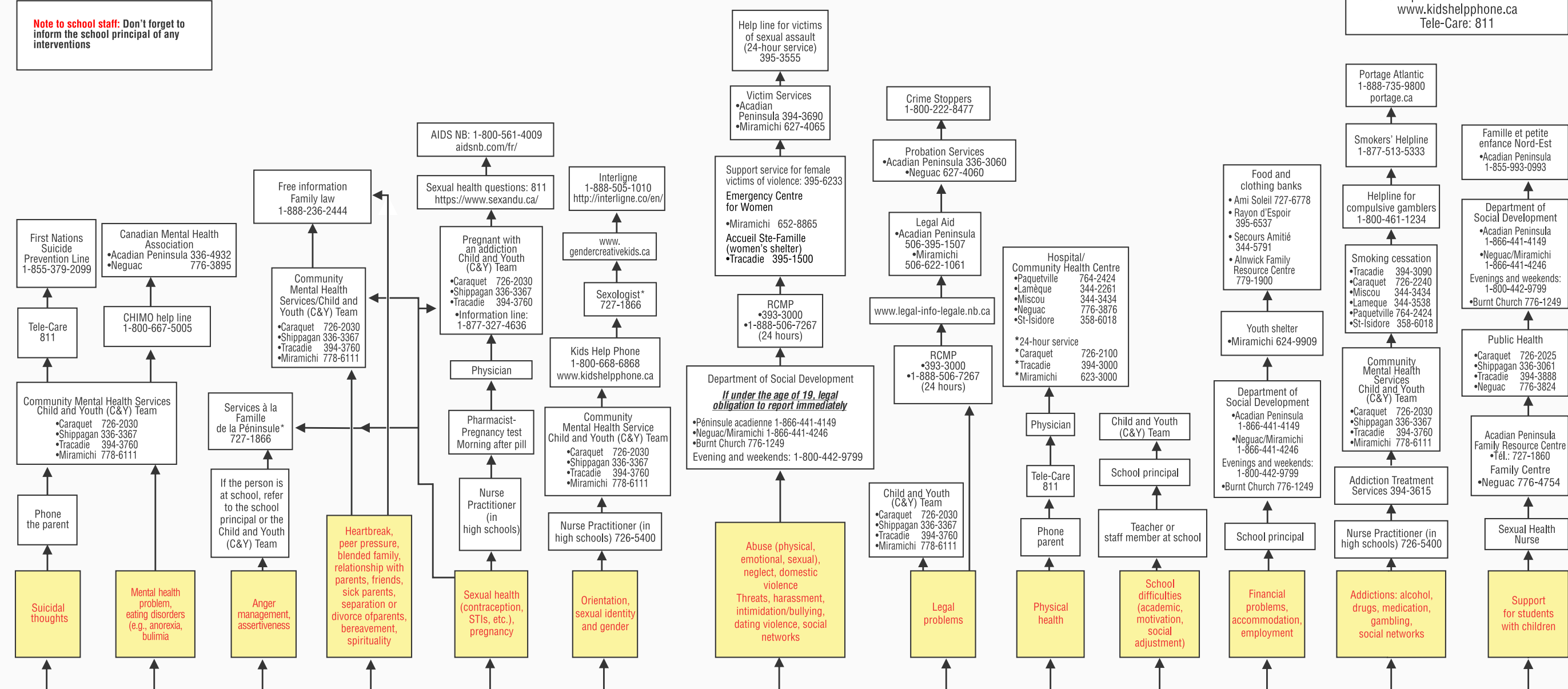


HELPING TREE

Note to school staff: Don't forget to inform the school principal of any interventions

Help lines
 Chimo: 1-800-667-5005
 Kids Help Phone: 1-800-668-6868
 www.kidshelpphone.ca
 Tele-Care: 811



*Fees or travel may be involved

*Note: Arrows can indicate a procedure to follow or a choice of services.



1 Consult the yellow boxes at the base of the Helping Tree and identify the difficulty or situation that concerns you.

Determine the difficulty and the resource.

2 Once the difficulty has been identified, consult the help resources listed for each one (white boxes) and determine which ones might be useful.



START HERE